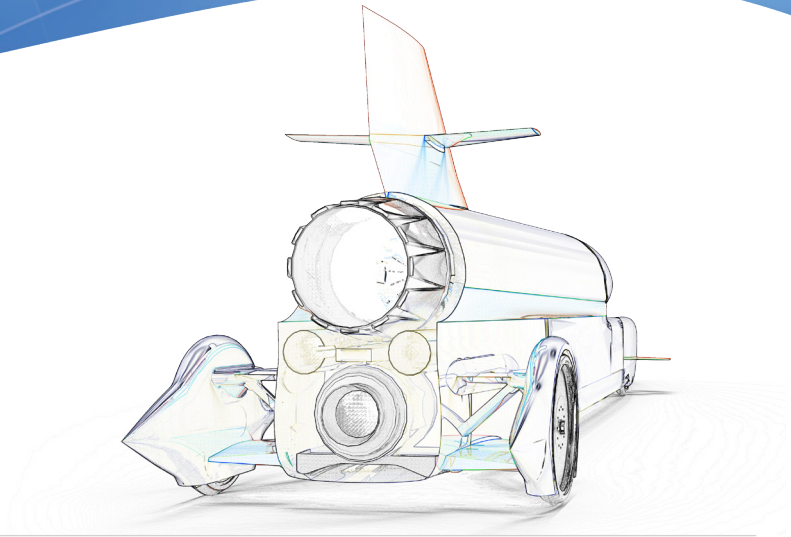


PowerSHAPE 2015 R2

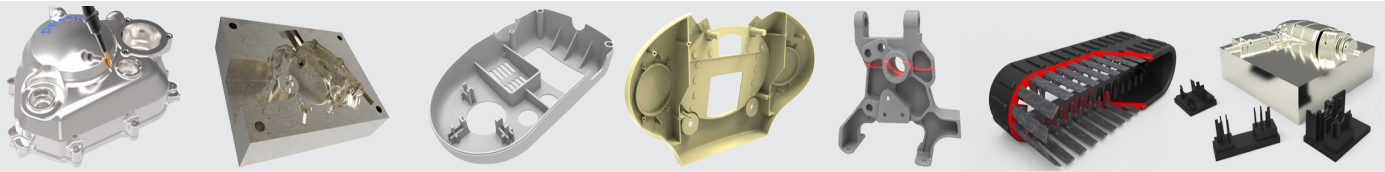
Highlights

www.powershape.com



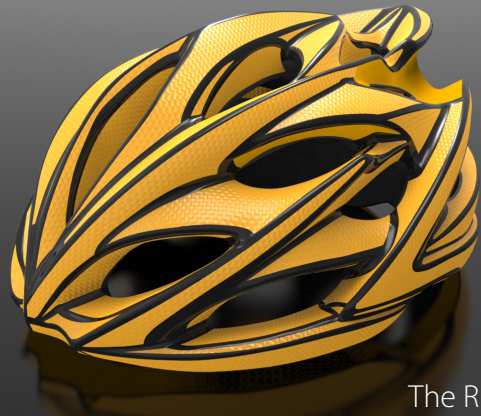
Powerful, versatile, easy-to-use modelling software to help you make great products.

From Reverse Engineering to Electrode, PowerSHAPE 2015 R2 brings enhancements and new features to every area of the program. PowerSHAPE 2015 R2 helps you design and make better products, faster.

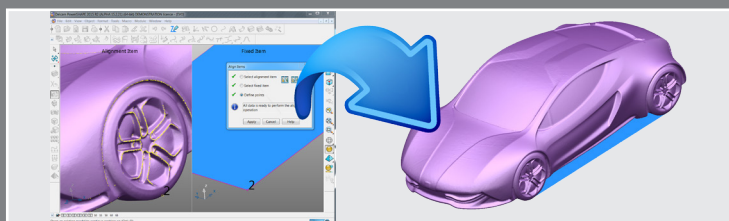


New features and enhancements

- ▶ Split-screen alignment of complex shapes
- ▶ Multi-implosion electrodes to save material
- ▶ Improved highlighting in Smart Feature Manager
- ▶ Single-operation editing of multiple items of the same type
- ▶ More accurate repointing of curves
- ▶ Morph-to-mesh to eliminate press-die spring-back
- ▶ Enhanced composite-curve creation
- ▶ Simplified management of Electrode projects

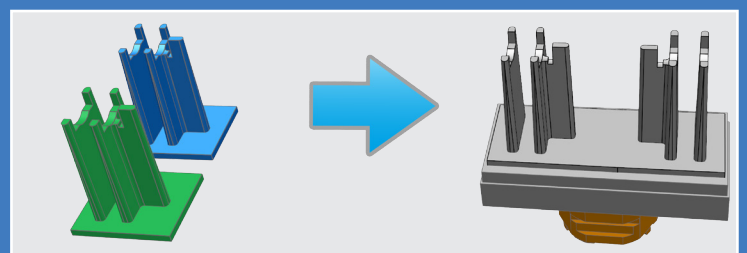


The Rudy Project



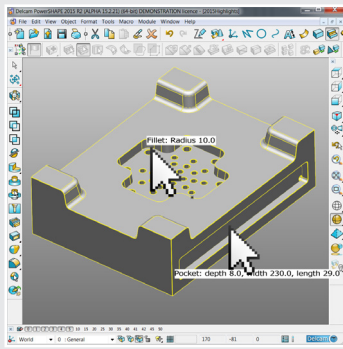
The split-screen alignment tool simplifies snapping of alignment points enabling you to align scanned data quickly and accurately.

Create electrodes from multiple solid bodies, saving stock material and reducing machining times. When one electrode wears out, simply rotate the electrode assembly to use the next.



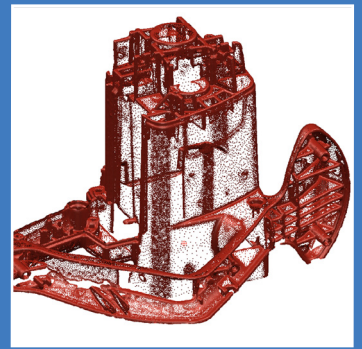
Smart Feature Manager

When identifying features, Smart Feature Manager displays the type and parameters of the feature interactively.



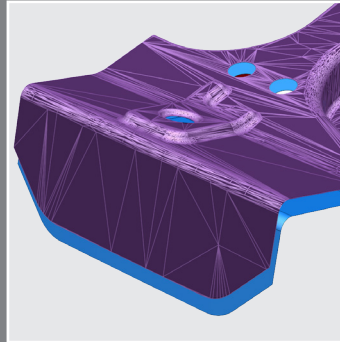
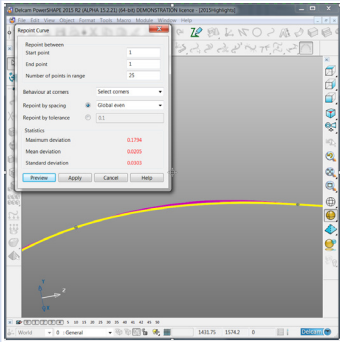
Live scanning

Connect directly to the most up-to-date scanning devices, to capture dense point clouds in real time.



Curve Repeating

The Reprint Curve dialog displays the deviation between the original curve and the new one. It is also possible to reprint a curve to a known tolerance.

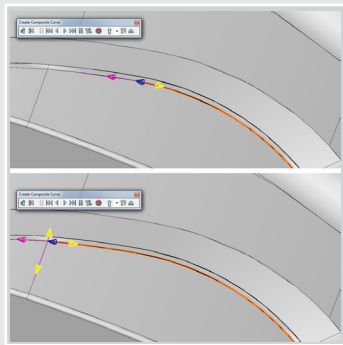


Morph to Mesh

Morph a complete solid or surface model to a mesh or point cloud. This can be used to modify a press tool to compensate for spring-back.

Composite Curve

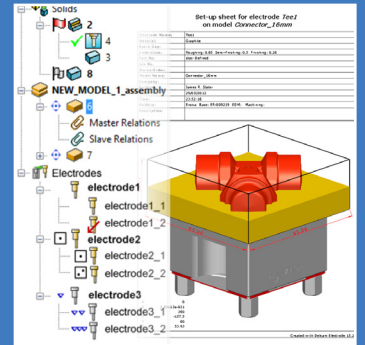
The improved composite-curve tool requires fewer mouse clicks, even when following fragmented edges.



Electrode

Electrodes are shown in the history tree, simplifying management of projects.

Electrode drawings update automatically when the design changes.



...PowerSHAPE lets us do whatever our customers want.

Deke Lemieux, Woodward Industries

For more information about PowerSHAPE visit www.powershape.com

Unlock the power of Delcam software



LEARNING ZONE

Visit www.delcam.tv/lz and see how Delcam software could benefit your business!

